

PART OF S.E. 1/4
SECTION 5, T.6N., R.1W., S.L.B.&M.

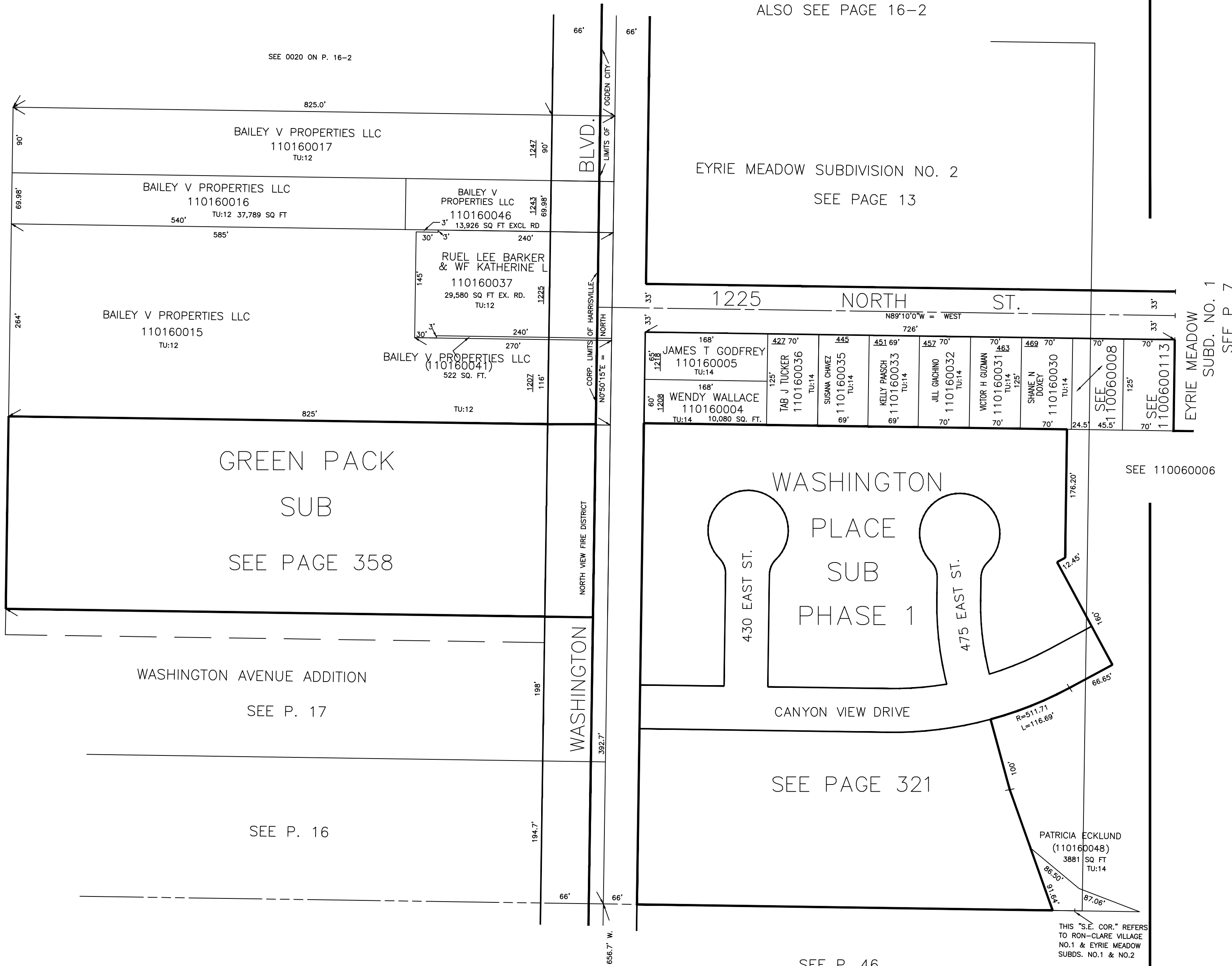
16-1

IN THE TOWN OF HARRISVILLE & OGDEN CITY

TAXING UNIT: 12,14

SCALE 1" = 100'

PREFIX:11-016



ALSO SEE PAGE 16-2

EYRIE MEADOW SUBDIVISION NO. 2
SEE PAGE 13

1225 NORTH ST.

GREEN PACK
SUB
SEE PAGE 358

WASHINGTON AVENUE ADDITION
SEE P. 17

SEE P. 16

WASHINGTON
PLACE
SUB
PHASE 1

CANYON VIEW DRIVE

SEE PAGE 321

PATRICIA ECKLUND
(110160048)
3881 SQ FT
TU:14

SEE P. 46

RON-CLARE VILLAGE NO. 1

SEE 110060006

EYRIE MEADOW
SUBD. NO. 1
SEE P. 7